

# ENVIRONMENTAL CAPABILITY



— ENVIRONMENT  
[www.contraintl.com](http://www.contraintl.com)



# COMPANY PROFILE

Contra International is a company with over a century of experience. Rooted in Lebanon since 1905, we now operate in 10 countries spread over 3 continents.

Thanks to our multinational suppliers and partners, we are considered as a leading global provider of environmental planning, engineering, and technology services.

Contra International Thinks GREEN®. Our products and services focus on a key market sector **\_\_ENVIRONMENT**. In that sector, we focus on:

**Waste Management**

**Sustainable Development**

**Environmental Planning**

**Water & Waste Water Treatment**

**Renewable Energy**

Contra International is one of the very few multi-disciplinary firms operating on a global basis. Our engineers work with our partners in an integrated environment and hence appreciate the interlacing requirements of all disciplines.

This integration benefits our customers by ensuring that our solutions are fully coordinated and holistic.

As a multi-disciplinary practice, we provide a team approach to all aspects of engineering, including building services, civil, electro-mechanical, and needless to say, environmental.

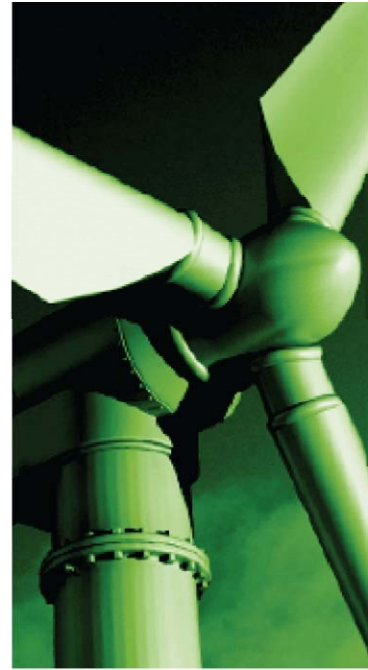
Our philosophy is simple: customers' needs are of utmost importance. And, to meet those needs, we take the time to understand our customers' business and concerns. The outcome is always a solution that is flexible enough to accommodate our customers' requirements all while creating sustainable value to our environment.

***Contra International –  
An Integrated Solution  
Provider***

*The scope of services offered includes master planning, feasibility studies, benchmarking, energy audits, design, documentation, supervision, commissioning, post contract evaluation and asset management.*

*These services are provided by our team of partners throughout their satellite offices in North America, Europe, Middle East, and Africa.*





# TOTALLY INTEGRATED SOLUTIONS

Our strength is our people, and the search for the most qualified is a continuous one. Our people are experts in their fields, dedicated and enthusiastic problem solvers who are willing to share their knowledge and expertise with the clients' staff.

We are experienced in working as individual contractors, as part of a small group, or on a large multi-disciplinary contracting team and, projects completed by our partners and us span the globe.

*“A local company;  
A global portfolio”*



## *A solution by Contra International*

Contra International is a company committed to making a difference for our employees, our customers, the environment and the communities we serve.

As an industry leader, we commit our knowledge and experience to stewardship of the environment, tackling tough issues such as providing renewable energy & resource conservation, recycling & waste diversion, and safe collection & disposal of waste.

Through Zero Waste ACT®, Contra maintains centralised environmental knowledge base such as information technology, technical development, and leading edge design solutions, just to name a few.

As a result of this structure, our various disciplines can access and share all the knowledge and technology gained and developed by our partner offices at the various geographical locations. This also enables us to readily undertake national and international projects in a single or multi- project office environment.

**EUROPE** England, Italy, Germany, France, Ireland, Romania, Russia, Bulgaria, Portugal, Scotland, Spain, Netherlands, Croatia

**ME&A** UAE, Qatar, KSA, Lebanon, Turkey, Tunisia, Ivory Coast, South Africa, Botswana, Algeria, Iran, Iraq

**ASIA** China, India

**AMERICAS** Canada, Venezuela



# WASTE MANAGEMENT

Contra's years of experience in the waste management industry has given us a unique position of leadership.

Together with our partners, we have delivered advisory solutions and developed engineering designs and approvals for numerous waste generating, transfer, treatment & disposal facilities, providing strategic assistance to governments, waste management groups, corporations and international aid agencies.

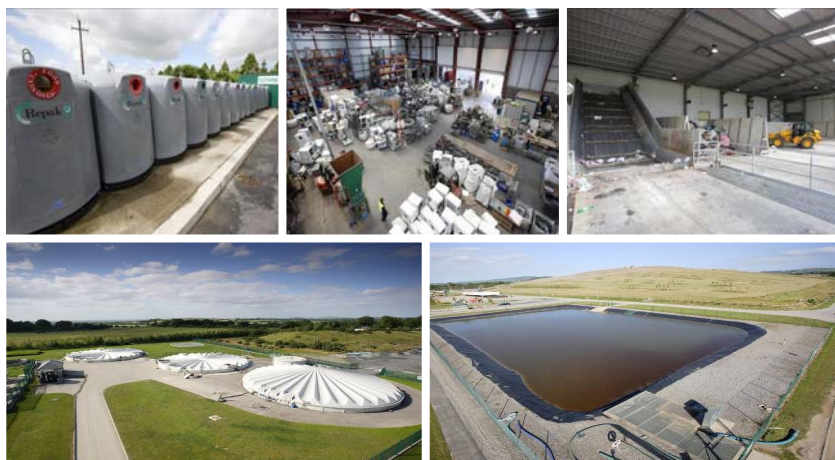
Our team of engineering and environmental professionals has significant experience in:

## Waste Treatment

- Waste Transfer stations
- Resource Recovery Centres
- Alternative Waste Treatment (AWT) facilities
- Energy from Waste (RDF & W2E)
- Biogas
- MBT: Mechanical & Biological Treatment

## Recycling

- Collection, Haulage, Recycling (Zero Waste ACT®)
- Materials Recovery Facilities (MRF)
- Commercial/Revenue Streams
- Publicity Campaigns
- Civic Amenity Sites



## Landfill Design

- Landfill Design & Restoration
- Landfill Gas Management & Utilisation
- Leachate & Stormwater Management
- Restoration, Closure & Afteruse Planning
- Environmental Data Management Reporting and support
- Environmental Monitoring Liabilities Risk Assessment
- Waste Transfer Station Design

## Composting/Organic waste treatment facilities

*“Our priority is to provide environmentally responsible and economically sustainable outcomes for our clients.”*





# SUSTAINABLE DEVELOPMENT

*“Sustainable development is development that meets the needs of the present without compromising the ability of future generations to meet their own needs.”*

Sustainable Development contains within it two key concepts:

the **needs**, in particular the essential needs of the world's poor, to which priority should be given;

and

the **limitations** imposed by technology and social organization on the environment's ability to meet present and future needs.

At Contra International, we are actively committed to maintaining a close equilibrium between the environment and the engineering disciplines required for successful project completion. Our integrated approach has been lauded as highly significant through the process of gaining government support and public acceptance of proposed sustainable development schemes.

Our teams provide engineered advice on

Groundwater protection

Air Quality Improvement

Waste Management Strategic Planning

Landfill Gas Utilisation

Environmental Data Management

Educational & Awareness Material Supply







# ENVIRONMENTAL PLANNING

Our Environmental Division adopts an integrated approach to environmental impact assessment, risk lessening, and environmental monitoring.

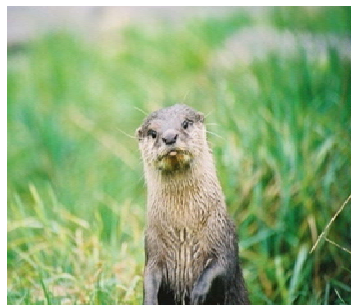
This significant resource enables Contra International to deliver a broad range of environmental service to its customers from public and private sectors alike, including:

**Due Diligence Services**

**Environmental Impact Assessment**

**Environmental Auditing and Monitoring**

**Strategic Environmental Assessment**



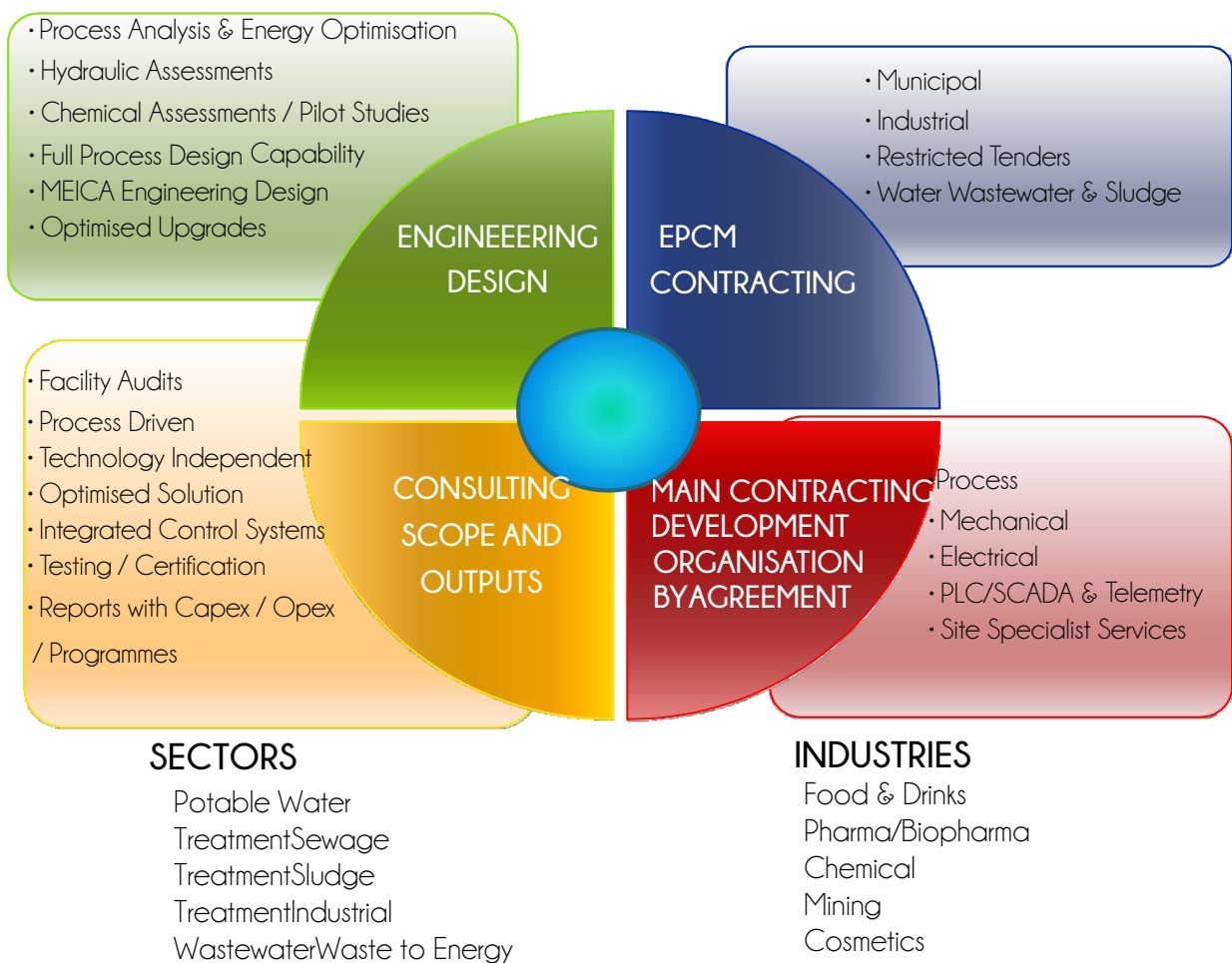
Our specialised environmental skills have lead to successful completion of a broad range of projects, from motorways & railways to major waste treatment facilities, industrial developments, and renewable energy projects.





# WATER TREATMENT

With more than 300 man-years of senior staff specialist experience in the water and wastewater Industry, our partners and we have completed more than 300 projects in all segments of the Water , Sewage and Industrial wastewater Industries (from 100 to more than 1,500,000 Population Equivalent). These ranged from Feasibility Studies/Lab Trials, through full Design and Engineering, all the way to EPCM Projects with Training and ongoing management services.



*“40 years treating waters all over the world”*





# RENEWABLE ENERGY

A focus on energy projects and renewable energy in particular has been a cornerstone of Contra International and its partners since the late 1990s.

Our specialized in-house energy groups provide comprehensive services and which include:

- Power Generation Potential
- Preliminary Site Assessment
- Project Management
- Site Monitoring & Analysis
- Wind Farm Design & Construction supervision
- Solar Farm Design & Construction supervision
- Due Diligence

*“Contra International and its partners have provided professional services to over 80 international onshore wind energy projects as well as one of the world’s largest offshore developments in Ireland.”*



We also have comprehensive experience in gas-pipeline-project development and Land Fill Gas (LFG) infrastructure development including site management.

Our experience in renewable energy ensures that the company can provide expert advice on all issues relating to grid connection, power purchase agreements, and statutory consents.



Contra International,

Greener every of the way

Three footprints made of green leaves, arranged in a descending staircase pattern from top right to bottom left. Each footprint is composed of a large leaf for the main body and several smaller leaves for the toes.

REFERENCE PROJECTS

# OUR PARTNERS





[www.contraintl.com](http://www.contraintl.com)