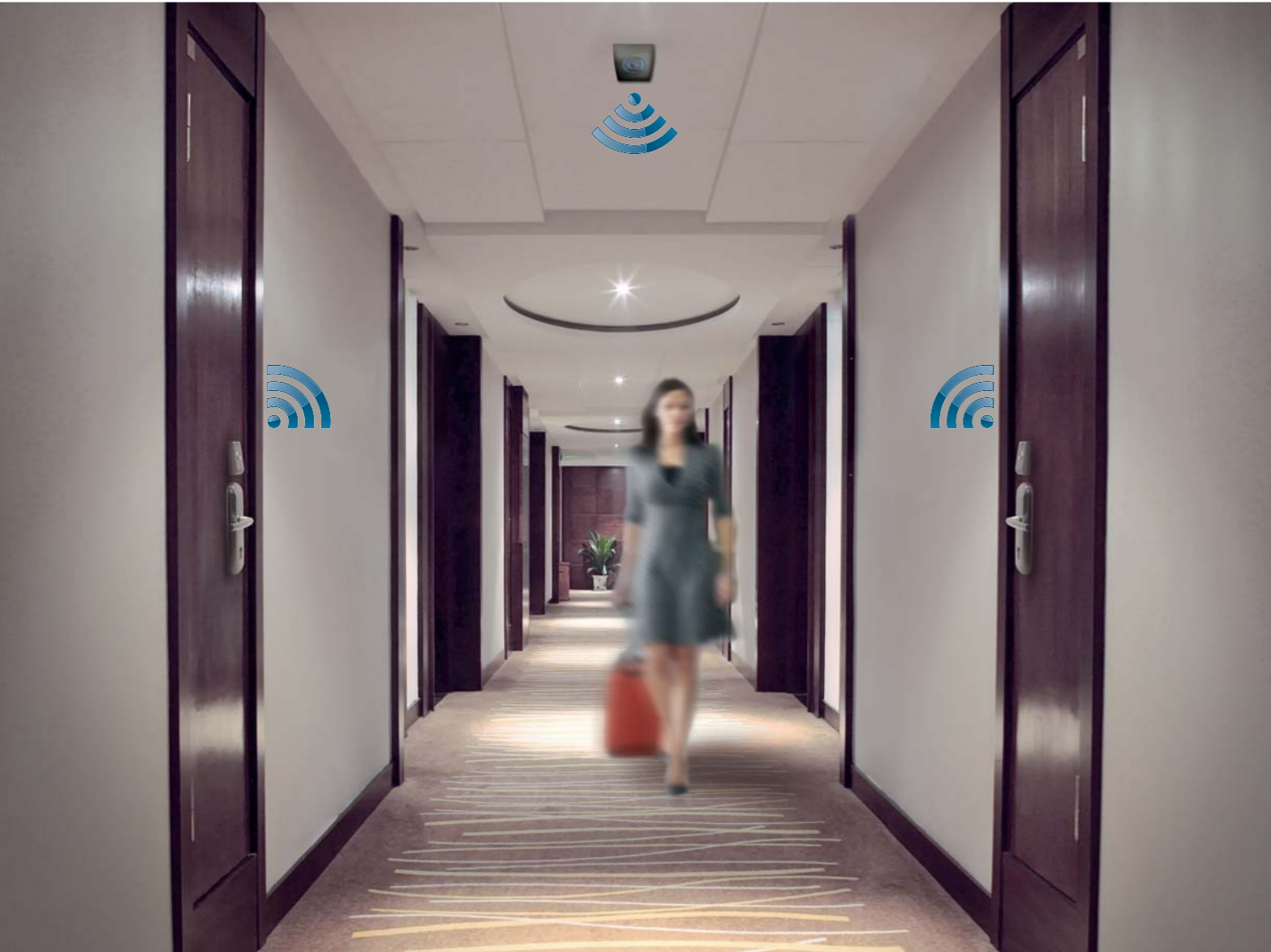


The Real Time Control



CISA SpA reserves the right to modify the products illustrated in this catalogue without any prior notice. All given measurements are expressed in millimeters.



Wave Mode Wireless



Ingersoll Rand's Security Technologies Sector is a leading global provider of products and services that make environments safe, secure and productive. The sector's market-leading products include electronic and biometric access-control systems; time-and-attendance and personnel scheduling systems; mechanical locks; portable security; door closers, exit devices, architectural hardware, and steel doors and frames; and other technologies and services for global security markets.

CISA SpA
Via Oberdan, 42
48018 Faenza (RA) Italy
Tel. +39 0546 677111
Fax +39 0546 677150
www.cisa.com

www.ingersollrand.com

PDE 636 2010 Edition.

© 2006 Ingersoll-Rand Company Limited



Wave Mode Wireless

The Real Time Control

Wave Mode is the contactless CISA locking system for hotels and other communities that combines the most advanced technologies with simplicity of use.

Wave Mode now goes online with Wireless technology based on Zigbee open platform.

Wave Mode Wireless system provides total security control from one central station, using online communication capabilities. By choosing to go online, hotels can maximize staff productivity, guest satisfaction, reliability and security procedures.

Benefits

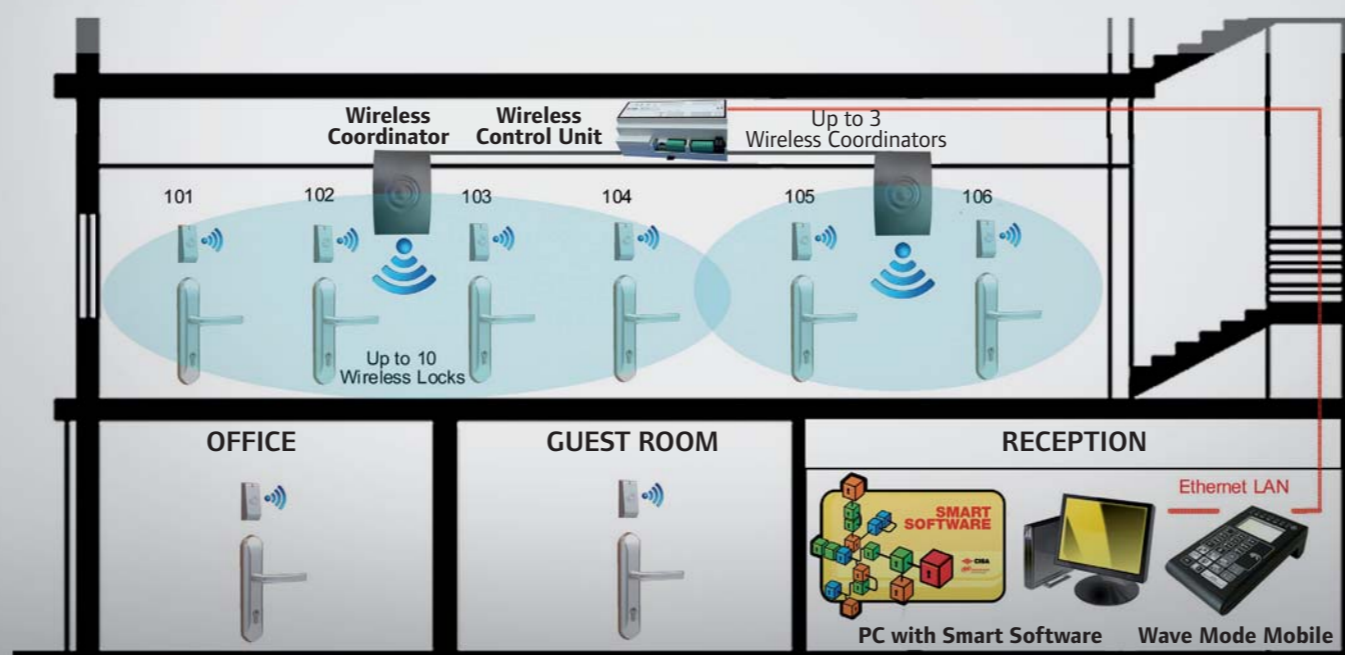
- **Cost effectiveness:** reliable two-way communication between Wave Mode Wireless Lock and central station without expensive wiring.
- **Staff efficiency:** no need to travel to each guest room to perform tasks.
- **Security and control:** real time card cancellation and door status monitor to keep system integrity.
- **Guest satisfaction:** real time guest cards recoding (extended stay, change of rooms, etc.).



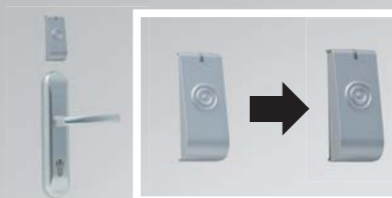
Wave Mode Wireless - Architecture

System Overview

Wave Mode Wireless guarantees the best compromise between Wireless technology benefits and architecture reliability. A central PC station (Smart Software) is in connection with the Wireless Control Units through the LAN Ethernet network. Wireless Control Unit, provided with up to 3 Wireless Coordinators, has been designed with distributed intelligence on board able to keep the Wireless connection and drive the Wireless information to the corresponding Wave Mode Wireless Locks. In case of wireless network breakdown the Wave Mode Wireless Lock can keep working in off-line mode and temporary disables wireless link waiting for network recovery.



Wave Mode Wireless - Components



Wave Mode Wireless Lock

Easy upgrade: Wave Mode Lock gets wireless simply plugging the wireless module under the reader.

Technical data:

- Zigbee open platform based.
- Sleep mode feature: low batteries consumption.
- Battery duration: > 20.000 cycles (approx.) > 2 years (approx.).



Wireless Coordinator

Antenna: connected to the Wireless Control Unit, it allows the interface between Wave Mode Wireless Locks and Wireless Control Unit. Wireless channel auto-tuning available to guarantee transmission efficiency in case of persistent radio interferences.

Technical data:

- Zigbee open platform based.
- Wave Mode Wireless Locks per Wireless Coordinator: 10 max.
- Distance from Wireless Control Unit: 25 mt. max.



Wireless Control Unit

Distributed intelligence: it links the central station to the Wave Mode Wireless Locks. In case of main PC-server break down, the Wireless Control Unit keeps the connection with the Wave Mode Wireless Locks and will communicate each event on central station soon after its recover.

Technical data:

- Wave Mode Wireless Locks per Wireless Control Unit: 30 max.
- Wireless Coordinators per Wireless Control Unit: 3 max.
- Power supply: 12/24 VAC/VDC.
- Ethernet LAN (CAT5 or greater).

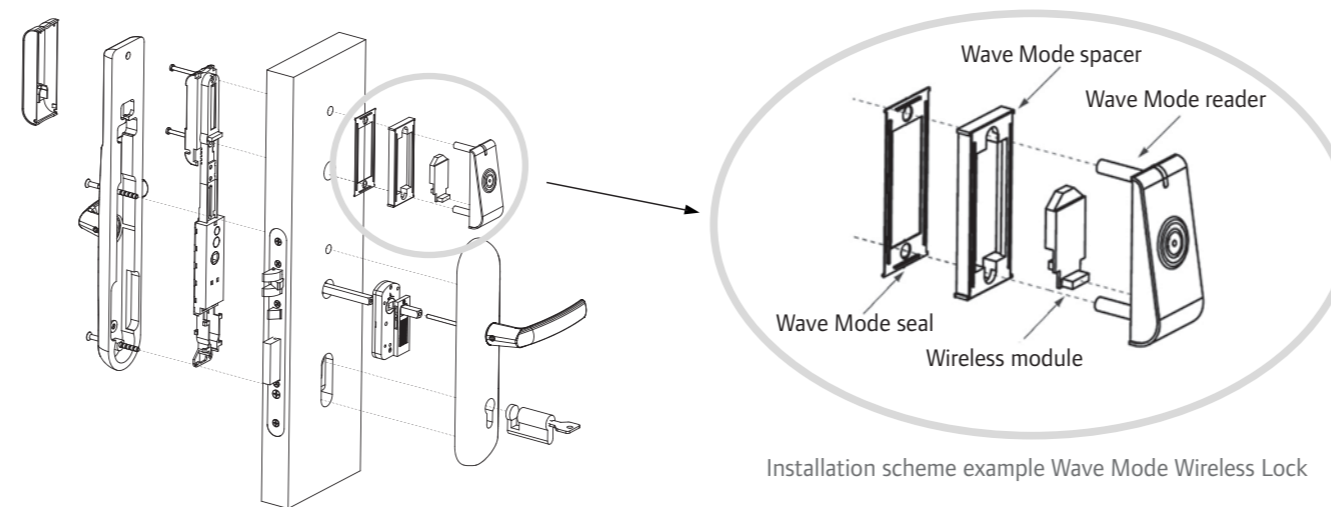
Smart Software

Software package to manage Wireless System via a user friendly GUI layout from the central station. Microsoft Windows XP, Vista, 7 compatible.



CERTIFICATION CE

Wave Mode Wireless devices are compliant to the European directive on the electromagnetic compatibility 89/336/CEE and subsequent modifications (92/31/CEE - 93/68/CEE).



Installation scheme example Wave Mode Wireless Lock

SYSTEM FEATURES

Remote System Management

- Cards cancellation: staff and guest cards can be cancelled or put on hold from central station.
- Staff monitoring: reports can be generated automatically to monitor staff movements.
- Cards recoding: guest cards can be recoded by the lock (extended stay, change of rooms, etc.).
- Audit trail retrieval: events on lock are collected at the central station without data storage limits.
- Remote door opening: lock can be opened remotely from central station.

Remote Diagnostic

- Lock battery status: always displayed on central station.
- Door ajar: if the door is left open, after a preset time a warning alarm is activated on central station.
- Wireless field quality: always displayed on central station.

Remote Maintenance

- Accurate lock synchronization: lock is always synchronized with central station time.
- Lock settings: lock is configured remotely (hardware information, autoprograms, etc.) without the need to go each room with portable devices.